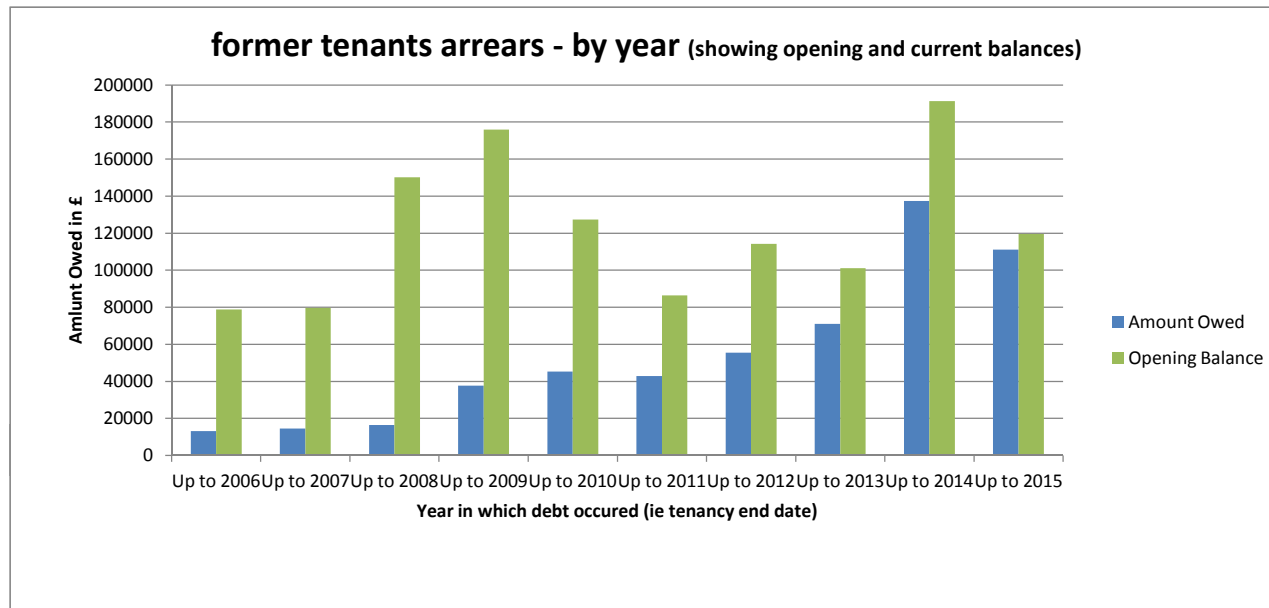


1. FTA Aged Debt Analysis

Year of debt	Up to 2006	Up to 2007	Up to 2008	Up to 2009	Up to 2010	Up to 2011	Up to 2012	Up to 2013	Up to 2014	Up to 2015	Up to 2016	TOTAL
Amount Owed	13194.36	14484.78	16483.8	37636.98	45338.3	42891.21	55,481	71046.21	137390.61	111045.1	98376.29	643368.28
Number	31	32	28	57	54	93	127	175	232	181	152	1162
Opening Balance	78861.42	79699.11	150145.2	175973.4	127348.7	86366	114263	101109.65	191325	119520	119520	1224611.5

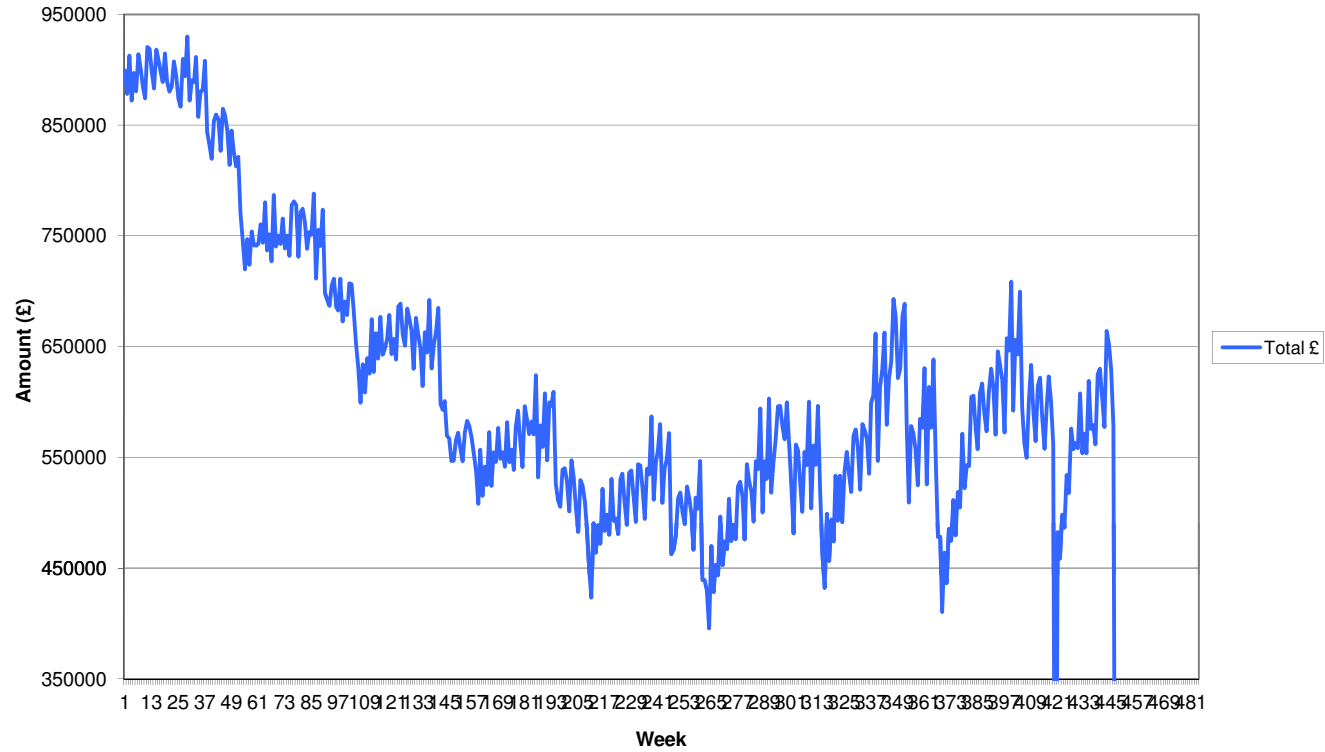
All figures to closest £

Reduction (exc 2013) 267664.84



2. Current Rent Arrears

TOTAL Current Arrears over time



BANDED ARREARS REPORT

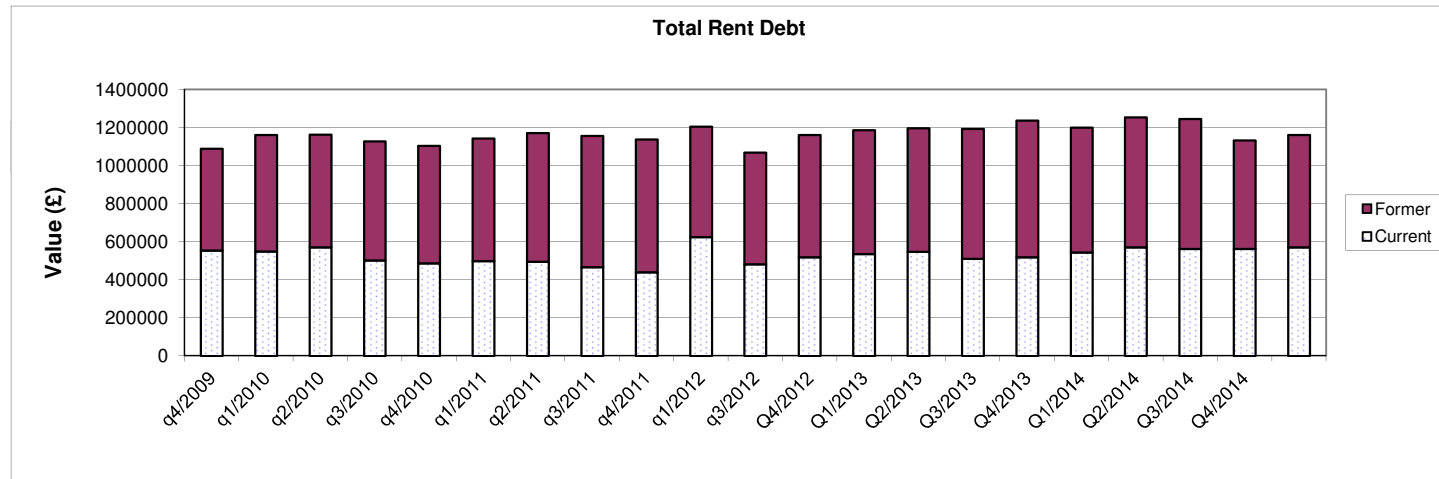
	Q1/2012	q2/2012	q3/2012	Q4/2012	Q1/2013	Q2/2013	Q3/2013	Q4/2013	Q1/2014	Q2/2014	Q3/2014	Q4/2014	Q1/2015	Q2/2015
< 4 Weeks Gross														
Numbers	1,059	848	936	632	1,390	1,061	874	773	1350	1058	1200	914	1332	1099
Value	101,266	87,639	106,243	75,303	135,019	118,129	91250	87208.28	142102.2	118019.2	125338.9	112112.5	141662.19	123799.4
< 7 Weeks Gross														
Numbers	167	171	175	158	177	166	187	176	180	205	170	184	208	212
Value	66,872	67,819	70,664	67,792	83,272	71,938	78034	74340.81	79889.21	94048.67	77528.76	80548.42	95421	96002.83
< 12 Weeks Gross														
Numbers	116	125	122	108	110	147	142	122	143	163	141	148	142	140
Value	81,052	85,467	83,858	80,445	114,724	107,070	104016	91854.26	106332.2	127163.9	109416	116603.6	114816.4	114601.3
< 20 Weeks Gross														
Numbers	79	88	91	76	94	96	90	83	78	93	96	93	76	84
Value	93,328	99,722	102,426	93,276	126,910	119,879	109005	101515.8	95988.18	116531.9	122422.8	121186.6	103089.04	113748.1
>20 Weeks Gross														
Numbers	56	63	65	55	49	54	43	51	50	48	53	55	46	52
Value	146,895	159,572	160,815	145,699	735,011	129,689	127003	123502	118629.4	114280.1	127559.1	131877.2	110954.64	130657.9
TOTAL VALUE	1,477	1,295	1,389	1,029	1,820	1,524	1,336	1,205	1,801	1,567	1,660	1,394	1,804	1,587
TOTAL NUMBERS	489,413	500,219	524,006	462,515	1,194,936	546,705	509,308	478,421	542,941	570,044	562,266	562,328	565,943	578,809
Bedroom Tax Numbers								830	676	728	611	716	596	641

3. Total Rent Owed (Current and Former)

	q4/2009	q1/2010	q2/2010	q3/2010	q4/2010	q1/2011	q2/2011	q3/2011	q4/2011	q1/2012	q2/2012
Current	553120	548858	571012	501376	486526	498259	494406	466881	439320	625151.6	594182
Former	535411	612028	592887	625685	617625	644640	676465.42	689315.72	698393.83	579788	562065.5
TOTAL	1088531	1160886	1163899	1127061	1104151	1142899	1170871.4	1156196.7	1137713.8	1204940	1156247.5

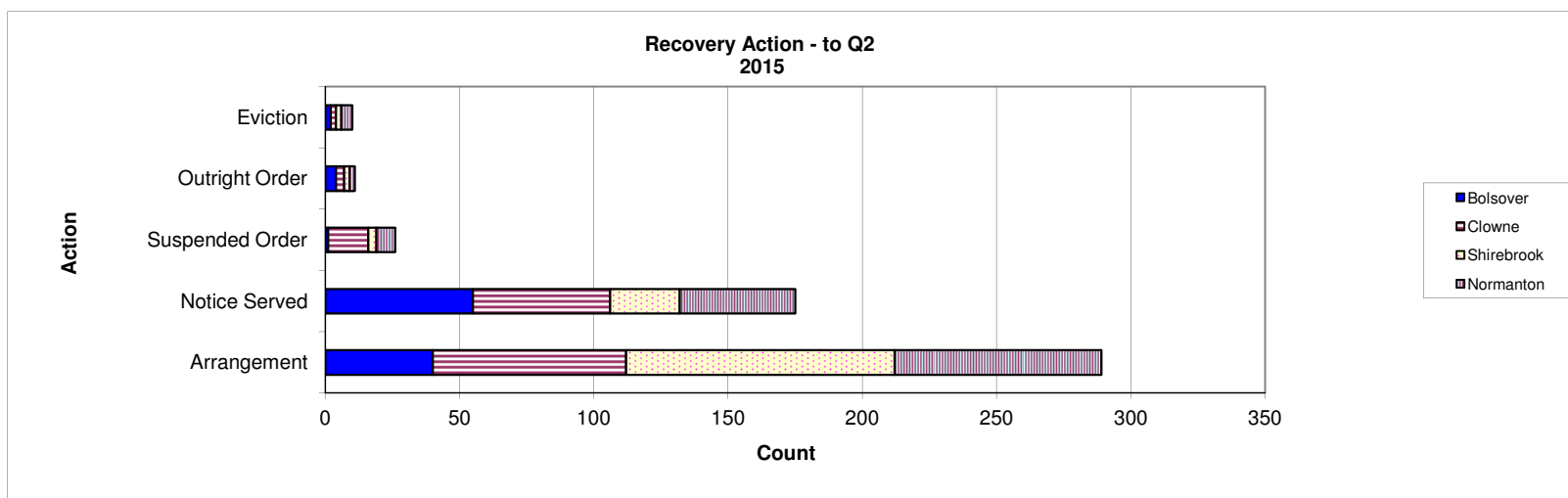
Continued	q3/2012	Q4/2012	Q1/2013	Q2/2013	Q3/2013	Q4/2013	Q1/2014	Q2/2014	Q3/2014	Q4/2014	Q1/2015
Current	481495	518526	535125	546890	509308	518526.63	542941.2	570604.6	562265.5	562328.4	571476.34
Former	586772	643368.28	650701	650123	683369	719184	657567.07	683128.29	683040.92	570254	590,239.85
TOTAL	1068267	1161894.3	1185826	1197013	1192677	1237710.6	1200508.3	1253732.9	1245306.4	1132582	1161716.19

Continued	Q2/2015										
Current	578809.41										
Former	638013.74										
TOTAL	1216823.2	0	0	0	0	0	0	0	0	0	0



4. Rent Arrears Actions - YTD October 2015

	Bolsover	Clowne	Shirebrook	Normanton	TOTAL
Arrangement	40	72	100	77	289
Notice Served	55	51	26	43	175
Suspended Order	1	15	3	7	26
Outright Order	4	3	2	2	11
Eviction	2	2	2	4	10
					0
TOTAL	102	143	133	133	511

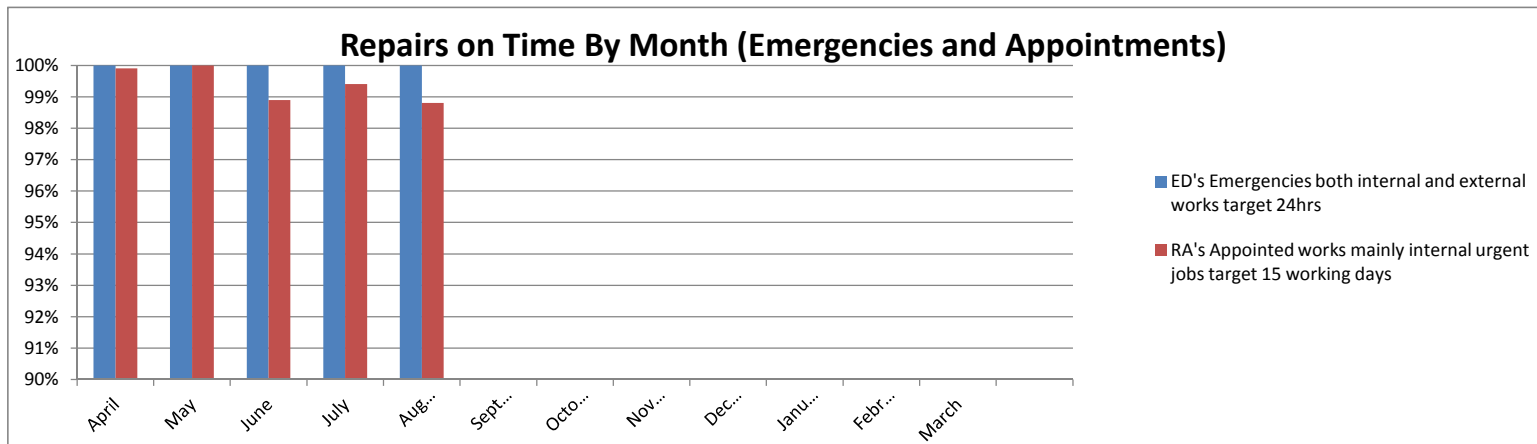


5. Repairs - Year to Date

	In time	Out of time	Total	%
ED's Emergencies both internal and external works target 24hrs	1296	0	1296	100.0%
RA's Appointed works mainly internal urgent jobs target 15 working days	2978	19	2997	99.4%
RN's Non urgent works mainly external jobs target 30 working days	819	362	4	98.9%
RR's Routine repairs mainly extensive external works target 60 working days	897	13	910	98.6%
PW's Planned works kitchens, boilers and painting target 265 working days	33	4	37	89.2%

Repairs - Month by Month

	April	May	June	July	August	September	October	November	December	January	February	March	
ED's Emergencies both	100.0%	100.0%	100.0%	100.0%	100.0%								
RA's Appointed works	99.9%	100.0%	98.9%	99.4%	98.8%								



6. Customer Feedback

	Satisfaction	1st Time
April	99%	98%
May	100%	96%
June	99%	95%
July	97%	94%
August	97%	94%
September		
October		
November		
December		
January		
February		
March		

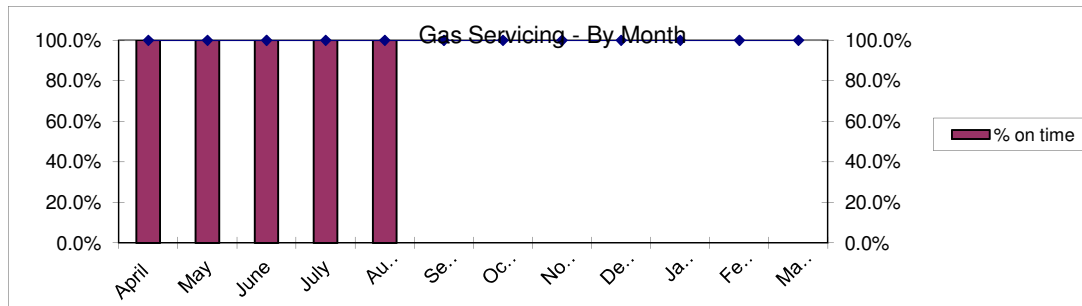
Tenant satisfaction - Target 98%

Right first time - Target 95%



7. Gas Servicing

Month	No. Completed in month	No. Completed in time	% on time	% Cumulative in time	Target
April	380	380	100.0%	100.0%	100.0%
May	511	511	100.0%	100.0%	100.0%
June	502	502	100.0%	100.0%	100.0%
July	490	490	100.0%	100.0%	100.0%
August	377	377	100.0%	100.0%	100.0%
September					100.0%
October					100.0%
November					100.0%
December					100.0%
January					100.0%
February					100.0%
March					100.0%



8. Waiting List

NUMBER OF APPLICANTS					
Month	Band A	Band B	Band C	Band d	TOTAL
April	2	67	1219	383	1671
May	4	65	1262	399	1730
June	2	67	1219	383	1671
July	7	62	1174	354	1597
August	4	64	1171	338	1577
September	5	65	1168	351	1589
October					0
November					0
December					0
January					0
February					0
March					0

HOUSING REQUIREMENTS					
Month	1 bed	2 bed	3 bed	4 bed	TOTAL
April	1316	224	102	29	1671
May	1370	229	102	29	1730
June	1316	224	102	29	1671
July	1271	206	98	22	1597
August	1264	201	93	19	1577
September	1268	206	95	20	1589
October					0
November					0
December					0
January					0
February					0
March					0

NOTE: Details of all let properties is reported on the Members Reporting Section on Perform.